

LAMA* SHOWMANSHIP

By George Clements - Judge

Everyone enjoys watching a well-trained lama in the show ring. Practicing your showmanship skills will help you achieve this goal and improve your success in halter and performance classes as well.

Simply put, showmanship is demonstrating to the judge your ability to display your lama to its best advantage. In this class you must demonstrate your showmanship skills and the Judge will score you according to how well you do compared to other exhibitors. Judging is based on your skill in training, grooming, knowledge of lamas and their care, and following directions. You will also be scored on style and ability in presenting your lama to the Judge. Your lama's confirmation, soundness and type/style of wool will not be judged.

I YOUR APPEARANCE

Your attire should be neat, clean, conservative, and appropriate for the class. You should dress to present a pleasing picture of you and your llama, you want to blend with your llama not outshine it. Additionally you need to project a confident, poised and courteous image to the judge.

STRONGLY RECOMMENDED ATTIRE: (a neat tailored style is appropriate)

TRADITIONAL

- ❖ Long sleeve, white, dress shirt (without excessive frills)
- ❖ Black pants or skirt
- ❖ Black closed toe shoes or dress boots (***foot ware that covers the complete foot is required***)
- ❖ Black belt with conservative buckle
- ❖ Long hair should be pulled back out of your face

ALTERNATIVE

- ❖ Conservative colored shirt or blouse that complements the llama
- ❖ Complete the outfit to match

OPTIONAL ATTIRE:

- ❖ Black gloves
- ❖ Western style hat
- ❖ Tie
- ❖ Vest

DO NOT:

- ❖ Wear- shorts or clothing with farm or animal names, open toe shoes or sandals or dangling earrings or other flashy jewelry
- ❖ Chew gum
- ❖ Bring treats or other training aids into the ring



* "Lama" is used to refer to both llamas & Alpacas in this document

(REVISED 2/05)

OTHER THINGS TO CONSIDER:

- ❖ A garment bag to keep your show outfit in will help keep you looking good in the show ring
- ❖ A makeup kit / hair brush or comb
- ❖ Lint remover for your clothes
- ❖ You can never have too many safety pins at a lama show
- ❖ A change of clothing to wear when not in the show ring (don't put on your show clothing until you are ready to go in the ring)
- ❖ A number holder gives a neater appearance than using pins to hold your number

II YOUR LAMA'S APPEARANCE

TACK:

- ❖ Clean and well cared for halter and lead- keep your show tack in a special place and use it only for showing
- ❖ Matching halter and lead that complement the lama (avoid bright colors)
- ❖ Halter must fit well
- ❖ A round lead may be easier to control but a flat lead may fit better in your hand. Do not use tassels or anything with the lama's or farm name on it

LAMA- to look it's best you need to start early and work with your lama often. You want your lama:

- ❖ In good condition (not fat / thin and free of any skin condition or disease)
- ❖ Well groomed – start early and avoid excessive grooming the day of the show (note alpacas are not deep cleaned and do not normally use any kind of grooming product on their coats)
- ❖ Toenails trimmed
- ❖ Eyes, ears and mouth clean
- ❖ Avoid using excessive grooming products – judges do not appreciate running their hands through “goop”

III TRAINING YOUR LAMA FOR THE SHOW RING

Each day you work with your lama pretend you are in the show ring being judged.

Train your lama to do the following:

- ❖ Allow you and others to touch it. Desensitize the head, ears, back and legs.
- ❖ Stand quietly in a balanced position when approached, touched and walked around by strangers.
- ❖ Permit you to halter without a struggle
- ❖ Lead with you walking ear to ear on the left side with “8-12” of slack in the lead line
- ❖ Start and stop on command.
- ❖ Set up square each time you ask it to stop
- ❖ Stand for several minutes while you are in your showmanship position
- ❖ Stand when you change from side to side in your showmanship position
- ❖ Back straight at least four steps
- ❖ Perform a haunch turn
- ❖ Change pace
- ❖ Show teeth
- ❖ Pick up a foot
- ❖ Use the potty pile
- ❖ If possible, train your lama to interact with other lamas properly (follow 6-8 feet, stand 2-3 from side, no butt sniffing, etc.)

TRAINING TIPS:

- ❖ **Always train using a loose lead.** Use “Tug and Release” the tug is the command and the release is the reward for responding. **A TIGHT LEAD DURING TRAINING TEACHES THE LAMA TO ONLY RESPOND TO A TIGHT LEAD IN THE SHOW RING!**
- ❖ Keep your training sessions short – start with 5 min and work up to 15-20 min.
- ❖ Always end on a happy note
- ❖ Vary your routines – if you do the same thing each time then this is what your lama will want to do in the show ring
- ❖ Most importantly – if you are not sure how to train for any of the above **ask before you start**. **You need to know how to lead, back, square up and turn properly before you can teach these things to your lama.**

IV IN THE SHOW RING

Remember to be **“natural”** undue fussing and maneuvering is objectionable.

BEFORE YOU ENTER:

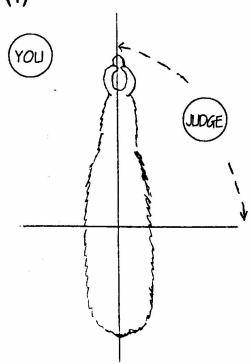
- ❖ Attend the Judges meeting and take careful note of the instructions given
- ❖ Check the posted show pattern and memorize the pattern your class will be judged on
- ❖ Take your lama to the potty pile
- ❖ Check in with the Gate Keeper as soon as your class is called to be on deck

ENTERING THE RING:

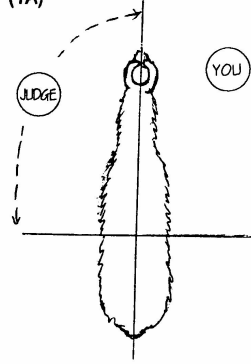
- ❖ The Gate Keeper will determine the order you enter the ring
- ❖ Consider the lama you will follow and the lama following you. Ask to be moved if you think there will be any problem.
- ❖ Watch the Ring Steward and / or Judge for directions to enter the ring
- ❖ Enter with a smile and keep your eyes on the Judge as much as possible.
- ❖ Avoid looking at your lama
- ❖ Stay close to the rail and 6-8 feet from the lama in front
- ❖ Move at a brisk walk but do not crowd the lama in front
- ❖ Your right hand should be holding the lead with 8-12 inches of slack in a way to keep your lamas head high and forming a “J” with the rope
- ❖ Your left hand holds the excess lead in a tight figure eight fashion, waist high and close to your body.

SETTING YOUR LAMA UP (see page 8 for additional information)

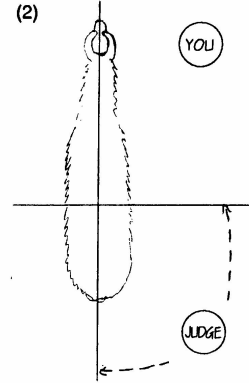
- ❖ Position your lama in line as directed by the Ring Steward (head to tail or side by side)
- ❖ When side by side check that your lama is even with the ***first lama*** in the line **not the one next to you.**
- ❖ When in a profile check that your lama is in line with the first lama
- ❖ Stop and check that your lama is standing square
- ❖ Assume your showmanship position standing off the lamas (right or left shoulder) at a 45 degree angle – (see diagram on page 4)
- ❖ Keep your eye on the Judge and always position yourself to give the Judge an unobstructed view of your lama
- ❖ No matter where the Judge is, stay in your showmanship position with your lama’s head up and your eye on the Judge



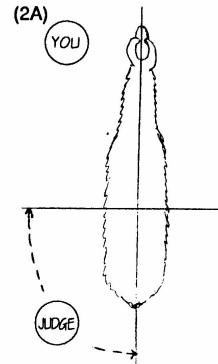
When the judge is on the front side you are on the opposite side



When the judge is on the front side you are on the opposite side



When the judge is on the back side you are on the same side



When the judge is on the back side you are on the same side

Study the diagram above and remember the phrase **–FRONT SIDE OPPOSITE SIDE, BACK SIDE SAME SIDE**

YOU AND THE JUDGE

WHEN THE JUDGE SIGNALS YOU TO APPROACH:

- ❖ Move to the left side of your lama if you are not already there
- ❖ Keep your head up and smile at the judge
- ❖ Look right at the judge not the lama or the ground
- ❖ Move forward at a brisk walk
- ❖ Stop an arm's length from the judge and check your lama to be sure is standing square
- ❖ Assume your showmanship position- standing straight, feet at a 45 degree angle to your lamas left eye, right hand holding the lead at the lamas eye level or higher with your left hand waist high and close to your body
- ❖ Wait for the judge to speak- when replying use "Sir"/"Mam" and use a strong confident voice looking at the judge as you speak

WHEN THE JUDGE APPROACHES YOUR LAMA:

- ❖ If the judge is on the right side of the llama- move the lead to your left hand, take a shorter grip on the lead and extend your right arm along the length of the lama to prevent it from moving when the judge touches it
- ❖ If the judge touches your lama, replace the fiber when the Judge removes their hand
- ❖ As the judge walks around remember to move so you don't block their view
- ❖ The judge may ask you lama related questions (anatomy, fiber, husbandry or showing)
- ❖ The judge may ask you to show your lamas teeth or pick up a foot
- ❖ The judge may ask you to back your lama

WHEN YOU RETURN TO THE LINE-UP:

- ❖ Use a haunch turn then collect your lama before moving
- ❖ Move at a trot or at the direction of the Judge
- ❖ Look back at the Judge making sure you are moving in a straight line to keep the rear of your lama directly in their line of sight
- ❖ Pause at the line and walk your lama through the line
- ❖ Move through the line 6-8 feet
- ❖ Pause and collect you lama for a moment
- ❖ Use a haunch turn and collect your lama before moving
- ❖ Walk back into the line

- ❖ Stop even with the first lama in the line-up (**this may not be even with the lama next to you**)
 - ❖ Check to make sure your lama is square
 - ❖ Assume your showmanship position and nod to the judge signifying that you are set
- REMEMBER TO:**

- ❖ Continue showing until the class is dismissed
- ❖ Keep your eye on the judge at all times
- ❖ Be ready for any additional directions that may come from the Ring Steward or the Judge

IF YOU HAVE TO PASS ANOTHER LAMA:

If for some reason the lama in front of you in the walk around stops or refuses to move it may be necessary for you to pass.

- ❖ Look to the Ring Steward for permission to pass – if you cannot get the Ring Stewards attention you may make the decision to pass
- ❖ Pass on the inside of the ring (keeping your lama in full view of the judge)
- ❖ Return to the rail as soon as possible

CHANGING POSITION IN THE LINE-UP:

Sometimes a judge may ask you to trade places with another exhibitor. This is usually only done when a class is very close and the judge is having trouble choosing between two people.

- ❖ At the direction of the judge walk your lama forward out of the line-up 6-8 feet
- ❖ Pause and collect your lama
- ❖ Do a haunch turn and collect your lama before moving
- ❖ Walk your lama back through your space in the line-up
- ❖ Move 6-8 feet straight past the line-up and collect your lama before moving
- ❖ Turn and move from the rear to the new space in the line-up (**do not use a haunch turn if the turn is ¼ turn or less**)
- ❖ As you pass the other exhibitor in the rear, keep both handlers in the middle between the lamas
- ❖ Stop even with the first lama in the line-up
- ❖ Square your lama
- ❖ Resume your showmanship position

CHANGING DIRECTION:

During the walk around the judge may direct the group to reverse the direction of movement.

- ❖ Make a haunch turn to the right
- ❖ Continue leading from the left side
- ❖ Position yourself slightly ahead of your lama so as to not block the judges' view of the lama

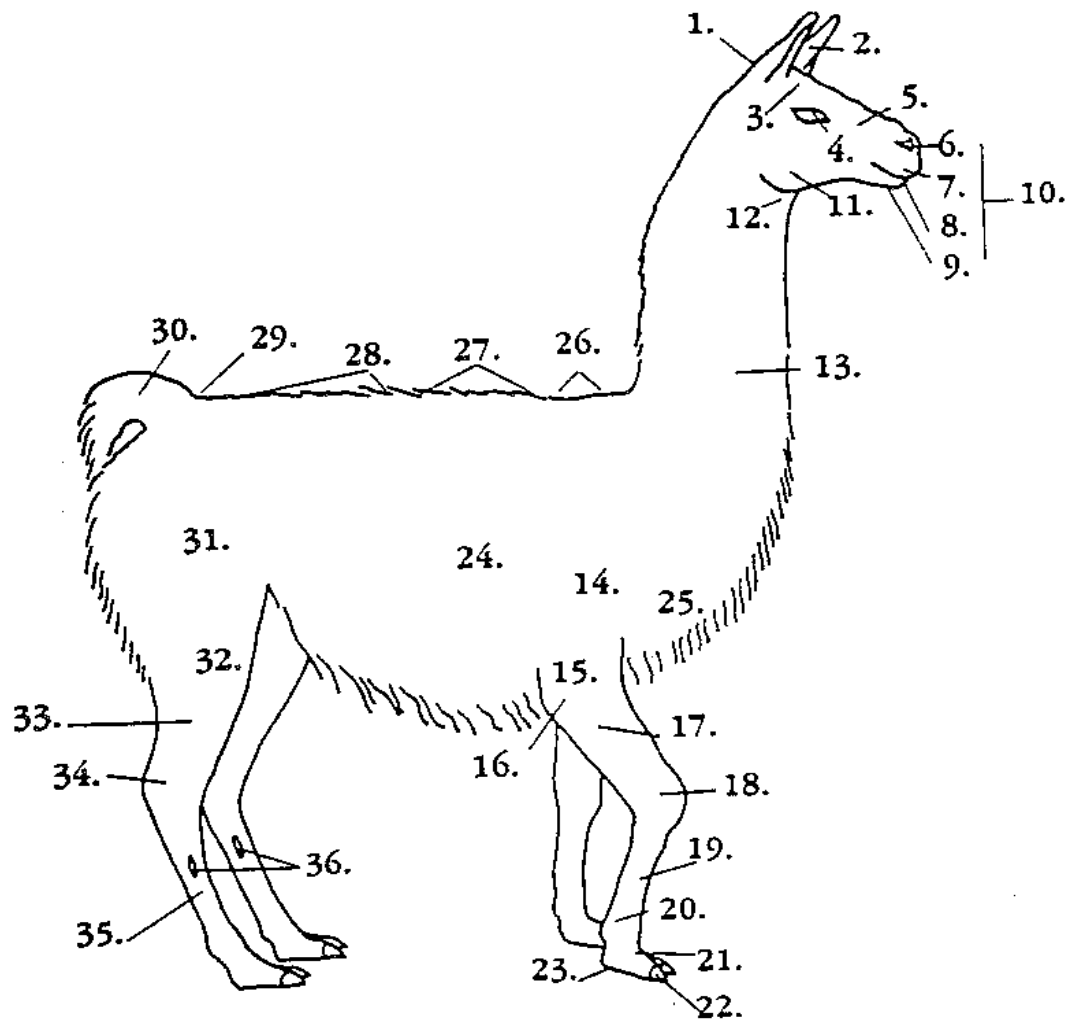
SHOW RING ETIQUETTE

- ❖ Check with the other exhibitors at the gate and arrange the order you enter if the gatekeeper doesn't give you an order. If you are able to select the order you enter in consider the sex of the other lamas, if your lama likes to walk out or is a follower and if there is any that are acting up. Position yourself accordingly.
- ❖ Keep at least one lama length between you and the lama ahead.
- ❖ When lining up side by side keep 3-4 feet from the lama next to you if possible.

- ❖ Do not talk to other exhibitors while in the ring.
- ❖ Speak to the Judge only if the Judge asks you a question (“Sir” / “Mam”) is a nice way to start.
- ❖ You may not receive any kind of help / coaching while in the ring (Mom can not say “smile”).
- ❖ You should not touch you lama while in the ring except to replace fiber the judge has moved.
- ❖ You may not use any kind of training devise or treat in the ring.
- ❖ Don’t forget to congratulate the winners and be gracious when someone congratulates you.
- ❖ If you have questions about your placing, you may ask the Ring Steward to speak to the Judge after the show. Most Judges are happy to review your placing and give suggestions for improvement.



**IF YOU ARE NOT HAVING FUN
SOMETHING MUST BE WRONG.
ASK FO HELP.**



- | | | |
|-----------------|------------------|------------------|
| 1. Poll | 13. Neck | 25. Chest/breast |
| 2. Ear | 14. Shoulder | 26. Withers |
| 3. Forehead | 15. Arm | 27. Back |
| 4. Eye | 16. Elbow | 28. Loin |
| 5. Face | 17. Forearm | 29. Tail Head |
| 6. Nostril | 18. Knee | 30. Tail |
| 7. Upper Lip | 19. Cannon/shank | 31. Thigh |
| 8. Mouth | 20. Fetlock | 32. Stifle |
| 9. Lower Lip | 21. Pastern | 33. Gaskin |
| 10. Muzzle | 22. Nail | 34. Hock |
| 11. Jaw | 23. Pad/slipper | 35. Hind Cannon |
| 12. Throatlatch | 24. Ribs | 36. Scent Gland |

Take time to memorize all 36 parts. You should be able to describe their location without looking or pointing to them. Example- "Sir the elbow is between the arm and the forearm."

Teaching your lama to “stop” on command

As you are leading your lama in the show ring, you will be on its left side with the lead in your right hand. There will be about 8-12 inches between your hand and the snap connected to the halter. Your hand will be held at eye level with the lama. To teach the stop command you need to do the following at the same moment in time:

- ❖ Say “stop”
- ❖ Stop moving yourself
- ❖ Extend your left hand across the front of the lama as if to make a gate
- ❖ Pull the lead rope straight up past the lamas ears
- ❖ Pivot your body into your 45 degree Showmanship position

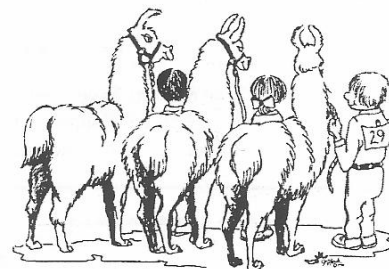
Begin this process at a very slow speed using a fence, wall or other fixed object to guide the lama in a straight line. Take just a few steps and then give the command to “**stop**”.

Immediately reward even slight hesitation on the lamas’ part and work up to the point where the lama will stop with out turning to the side. Your lama will quickly learn to associate your pulling the lead rope up with stopping. You will be successful when you no longer need to extend your left hand and a slight upward tug on the lead produced the result you are looking for.

Teaching your lama to “Stand”

If you have a young lama with little training, you may find it helpful to start by tying the lama to a fence for extended periods of time to teach them to stand. Be sure to use an inter tube in the tie out line so the lama doesn’t hurt themselves when they jump or jerk and never leave them unattended.

Begin with the command to “*stop*”. As you come to a stop, pivot your body to the right so you are standing in your showmanship position with your feet at a 45-degree angle to the lama, your lead in a “jay loop” and your right hand at eye level with the lama. As you do this, give the command to “**Stand**”. It will be helpful if you do this in a confined area so there are not a lot of opportunities for the lama to move around. (Working between gate panels, parked vehicles, or bales of hay may help) Reward short periods of time (a few seconds at first) and gradually work up to several minutes. Try to keep your lamas head pointed forward and try not to let him get distracted. Gently giggling the lead or very lightly blowing on his nose may keep him thinking about you and not wanting to look or move around.



Teaching you lama to “Square Up”

“Squaring Up” your lama is a way of positioning your lama to best display its conformation. When standing with its head up and top line straight the weight should be evenly distributed on all four feet with the front and the rear feet even with each other and in line from front to back. Ideally, your lama will automatically “Square Up” each time you give a stop command.

Begin by placing the lama a few feet in front of a fixed object such as a wall to keep it from moving backwards. Assume your backing position and focus on getting the back feet even.

To move a rear foot, very gently push the lead rope down and angle it away from the foot you want to move back (to move the right rear foot push down on the lead and to the left). Once you have the rear feet even look at the front. To move a front foot forward, very gently pull up and in the direction of the foot you want to move (to move the right front foot-pull up and to the right)

TEACHING YOUR LAMA TO “BACK”

Assuming that you are standing in your Showmanship position:

- ❖ Switch hands on the lead rope by placing your left hand directly under the snap (**be careful not to hold the snap**) and hold the lead in your right hand
- ❖ Turn facing the rear of your lama so that your body is beside the lama (**never stand directly in front of the lama when backing**)
- ❖ Extend your right hand out along side the lama
- ❖ Give the “back” command and push straight back on the lead with your left hand as you take a step back (**do not push on your lama to make it back**)
- ❖ Steering – as you push back with your left hand push to the side in the opposite direction you want the back of the lama to move. (To move the rear of the lama to the right push back and to the left on the lead rope)